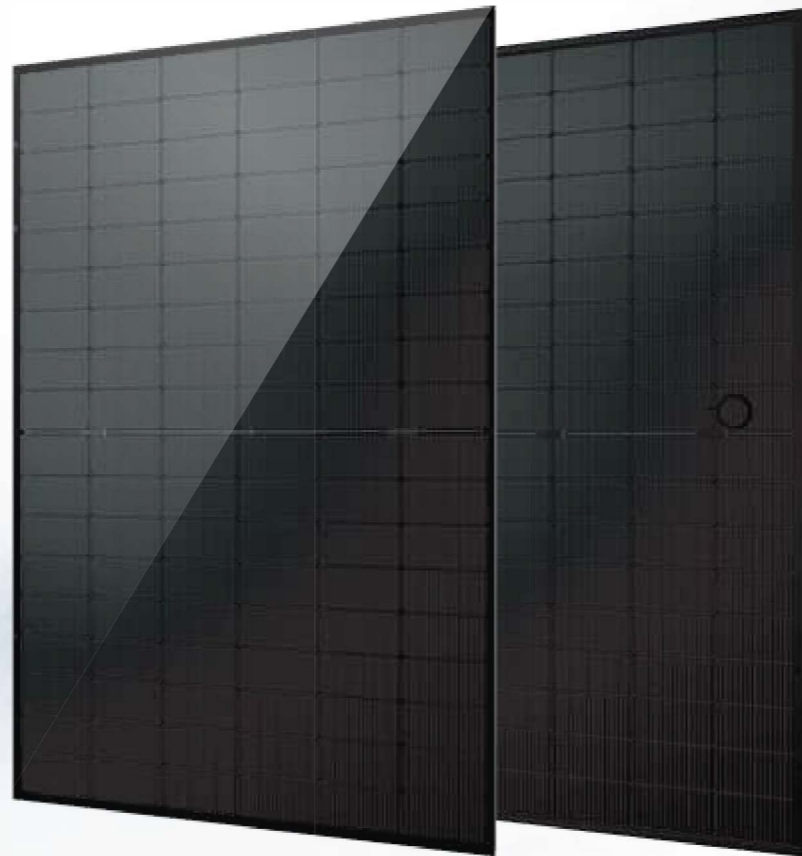


Black Series  
BHI COM-V2(BK)



Product Range **470W**

N-Type Full Black Monocrystalline

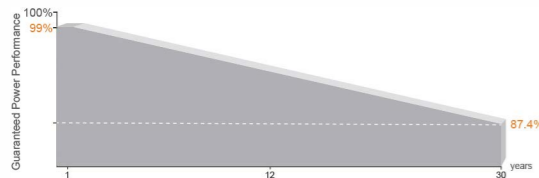


**470W**  
Maximum Power Output

**0~+5W**  
Positive Power Tolerance

**22.79%**  
Maximum Efficiency

**Linear Performance Warranty**  
25 Year Product Warranty  
30 Year Linear Power Warranty  
<1% First Year Power Degradation  
<0.4% Year 2-30 Power Degradation



**Certifications**  
Quality Management System and Product Certification.  
IEC61215(2021), IEC61730(2023), IEC61701  
IEC61215-2 (bifaciality): 2021  
ISO9001:2015: Quality Management System  
ISO14001:2015: Environment Management System  
ISO45001:2018: Occupational health and safety management systems



**MBB Half-Cut Solar Cell**  
120 Cells

**Higher Module Conversion Efficiency**  
Higher module output up to 450W with module efficiency up to 22.79%.

**Low-Light Performance**  
Advanced glass and surface texturing allows for excellent performance in low-light environments.

**Transparent Dual-glass Design**  
Excellent fire rating, with better temperature coefficient.

**Higher Power Output**  
Module power increases 5-25%, generally bringing significantly lower LCOE and higher IRR.

**Double Glass, 120-CELL HALF-CUT SERIES**

ELECTRICAL PARAMETERS AT STC	
Module Type: BHI-ComV2(BK)	
Maximum Power(Wp)	470W
Open Circuit Voltage(Voc)	86.5 V
Short Circuit Current(Isc)	7A
Maximum Power Voltage(Vm)	70.15 V
Maximum Power Current(Imp)	6.7 A
Module Efficiency	22.79%
Maximum Series Fuse	10A
Watts Positive Tolerance	0~+5W
Number Of Diode	3
Standard Test Conditions	1000W/M <sup>2</sup> ,25°C,AM1.5
Maximum System Voltage	1000V/DC (11 in series)
Temperature-Coefficient Isc	+0.043%/°C
Temperature-Coefficient Voc	-0.24%/°C
Temperature-Coefficient Pmp	-0.30%/°C
Operating Temperature	-40°C...+85°C
Normal Operating Cell Temperature	45±2°C
Load Capacity For The Cover Of The Module (Glass)	5400Pa(IEC61215)(snow)
Load Capacity For The Front & Back Of The Module	2400Pa(IEC61215)(wind)

ELECTRICAL CHARACTERISTICS WITH 10% SOLAR IRRADIATION RATIO	
Module Type: BHI-ComV2(BK) Maximum	
Power(Wp)	470W
Open Circuit Voltage(Voc)	86.5V
Short Circuit Current(Isc)	7A
Maximum Power Voltage(Vm)	70.15V
Maximum Power Current(Imp)	6.7 A
Irradiation Ratio (Rear/Front)	10%
*Bifaciality=Pmax,Rear/Rated Pmax,Front	

MECHANICAL CHARACTERISTICS	
Front/Back Cover (Material / Thickness)	low-iron tempered glass 2.0 / 2.0 mm
Cell (Quantity / Material / Dimensions)	120(6x9x2) / monocrystalline silicon,bifacial
Frame (Material / Color)	aluminum hollow-chamber frame on each side anodized aluminum alloy / Black
Junction Box (Protection Degree)	≥IP68
Cables & Plug Connectors	4mm <sup>2</sup> , 300mm in length,length can be customized
Module Dimensions (L / W / H)	1909x1134x30mm
Module Weight	22 kg
Application Class	Class A
Electrical Protection Class	Class II
Fire Safety Class	Class A

PACKING				
Container Size	Units/Pallet (PCS)	Weight/Pallet (KG)	Pallet Measurement (in)	Units/Container (PCS)
40HQ	36	825	69"x44"x45"	936

